

# 6th HANDS-ON COURSE ON NEUROSURGICAL APPROACHES

## ORGANIZATION:

Servicio de Neurocirugía  
Hospital Clínico Universitario, Valencia

Departamento de Anatomía y Embriología Humana  
Facultad de Medicina, Universidad de Valencia

Fundación Investigación del Hospital Clínico  
Universitario de Valencia  
Hospital Clínico Universitario, Valencia

## WORKSHOP FEES:

1.500.- € (full attendance: lectures and laboratory,  
certificate, materials, refreshments, lunches, special  
dinner, transfers from/to Hotel Vincci Palace, Midas Rex  
Course)

500.- € (excepting laboratory and Midas Rex Course)

## SECRETARY AND REGISTRATION:

Secretaría de la Fundación Investigación del Hospital  
Clínico Universitario de Valencia

Avda. Blasco Ibáñez, 17  
46010-Valencia, Spain  
Tel.: (34) 963 862 894

<https://fundanet.fihcuv.san.gva.es/cursoscongresos>  
(March 25 until July 07)

## CERTIFICATE OF ATTENDANCE:

Hours accredited by the Comisión de Formación  
Continuada of the EVES

## ACCOMMODATION:

HOTEL VINCCI PALACE \*\*\*\*  
La Paz, 42  
46003-Valencia, Spain

## TRAVEL AGENCY:

VIAJES TRANSVIA TOURS S.L.  
Tel.: (34) 963 423 888  
[inma.fernandez@viajestransvia.com](mailto:inma.fernandez@viajestransvia.com)

## FOR ADDITIONAL INFORMATION:

[www.neurocirugiavalencia.com](http://www.neurocirugiavalencia.com)  
[gonzalez\\_jos@gva.es](mailto:gonzalez_jos@gva.es)  
[formacion@inlciva.es](mailto:formacion@inlciva.es)

## COURSE CO-DIRECTORS

**Evandro de Oliveira**  
Instituto de Ciências Neurológicas  
São Paulo, Brasil  
**José M. González-Darder**  
Servicio de Neurocirugía  
Hospital Clínico Universitario, Valencia

## GUEST FACULTY

**Marcos Tatagiba**  
Department of Neurosurgery  
University of Tübingen, Tübingen, Germany

## FACULTY

**José M. González-Darder**, Valencia  
**Evandro de Oliveira**, São Paulo  
**Vicent Quilis-Quesada**, Valencia  
**Marcos Tatagiba**, Tübingen

## LABORATORY

**Fco. Martínez-Soriano**, Valencia

## COURSE LOCATION

Departamento de Anatomía y Embriología Humana  
Facultad de Medicina  
Avda. Blasco Ibáñez, 15  
46010 Valencia, Spain

## DATES

July 15/19, 2013

## NUMBER OF PARTICIPANTS

32 'laboratory' places

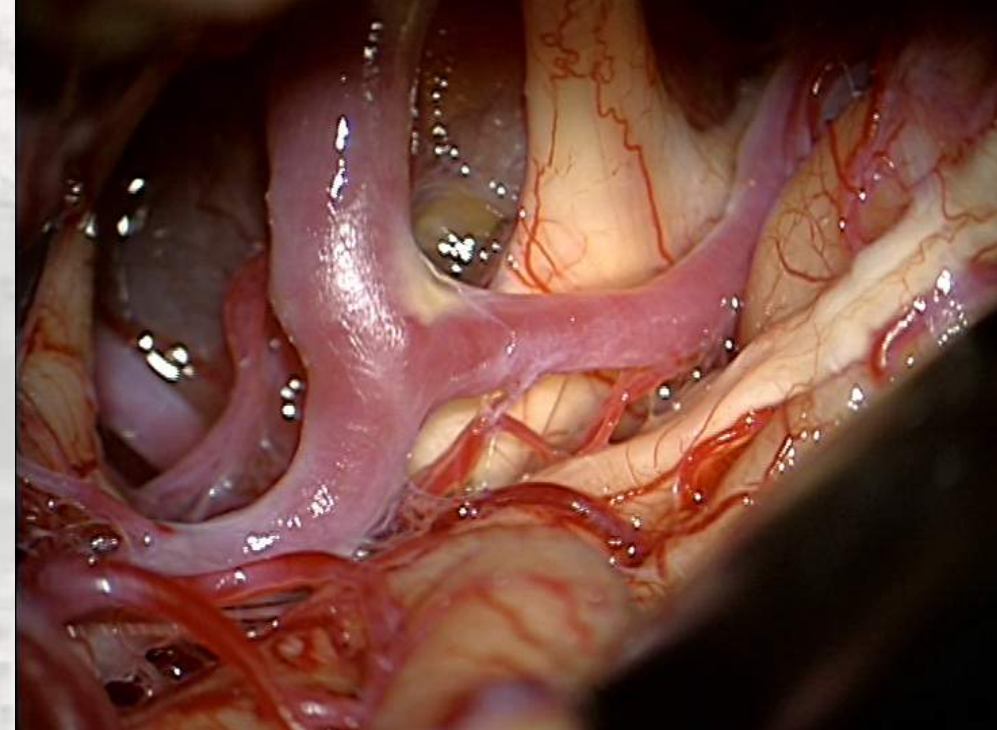
## LANGUAGE

English

## PAYMENT, REGISTRATION AND CANCELLATION

Payment will be made only by Bank Transfer.  
Registration will be effective after full payment.  
Cancellation: no later than 30 days before to the Course  
date; complete refund minus 20% as handling fee.  
<https://fundanet.fihcuv.san.gva.es/cursoscongresos>

'Actividad de Interés Sanitario'  
AGÈNCIA VALENCIANA DE SALUT



# 6th HANDS ON COURSE ON NEUROSURGICAL APPROACHES

## SKULL BASE APPROACHES

**Approaches for vascular and  
tumoral pathology**

**Valencia, July 15-19, 2013**

# 6th HANDS-ON COURSE ON NEUROSURGICAL APPROACHES SKULL BASE APPROACHES

<b>SESSION 1</b> Monday July 15	<b>MIDAS REX COURSE</b>		<b>SESSION 6</b> Wednesday July 17	<b>SUPRACEREBELLAR INFRATENTORIAL APPROACH</b>	
09,00-13,30	Midas Rex Course		14,30-15,15	<i>Lecture:</i> Tentorial Incisura and Pineal Regions Anatomy	EVANDRO DE OLIVEIRA
<b>SESSION 2</b> Monday July 15	<b>PTERIONAL AND PRETEMPORAL APPROACHES</b>		15,15-16,00	<i>Lecture &amp; Anatomic demonstration:</i> Supracerebellar Infratentorial Approach	EVANDRO DE OLIVEIRA
14,15-14,30	Opening		16,00-19,30	<b>LABORATORY:</b> - Supracerebellar Infratentorial Approach	ALL FACULTY MEMBERS
14,30-15,15	<i>Lecture:</i> Pterional and Pretemporal Approaches	EVANDRO DE OLIVEIRA	<b>SESSION 7</b> Thursday July 18	<b>SUPRACEREBELLAR TRANSTENTORIAL APPROACH</b>	
15,15-16,00	<i>Lecture &amp; Anatomic demonstration:</i> Pterional and Pretemporal Approaches	VICENT QUILIS-QUESADA	08,30-09,15	<i>Lecture:</i> Basal and Medial Temporal Lobe Approaches and Pathology	EVANDRO DE OLIVEIRA
16,00-19,30	<b>LABORATORY:</b> - Pterional and Pretemporal Approaches	ALL FACULTY MEMBERS	09,15-10,00	<i>Lecture &amp; Anatomic demonstration:</i> - Supracerebellar Transtentorial Approach	EVANDRO DE OLIVEIRA
<b>SESSION 3</b> Tuesday July 16	<b>ORBITOZYGOMATIC APPROACH</b>		10,30-13,30	<b>LABORATORY:</b> - Supracerebellar Transtentorial Approach	ALL FACULTY MEMBERS
08,30-09,15	<i>Lecture:</i> Cavernous Sinus Anatomy	EVANDRO DE OLIVEIRA	<b>SESSION 8</b> Thursday July 18	<b>FAR LATERAL APPROACH</b>	
09,15-10,00	<i>Lecture &amp; Anatomic demonstration:</i> Three Pieces Orbitozygomatic Approach	VICENT QUILIS-QUESADA	14,30-15,15	<i>Lecture:</i> Suboccipital Muscular Triangle and Foramen Magnum Anatomy	EVANDRO DE OLIVEIRA
10,30-13,30	<b>LABORATORY:</b> - Orbitozygomatic Approach	ALL FACULTY MEMBERS	15,15-16,00	<i>Lecture &amp; Anatomic demonstration:</i> Far Lateral Approach	JOSÉ M GONZÁLEZ-DARDER
<b>SESSION 4</b> Tuesday July 16	<b>SUPERIOR APPROACH TO THE CAVERNOUS SINUS</b>		16,00-19,30	<b>LABORATORY:</b> - Far Lateral Approach	ALL FACULTY MEMBERS
14,30-15,15	<i>Lecture:</i> Superior Approach to Tumoral and Vascular Pathology within and around the Cavernous Sinus	EVANDRO DE OLIVEIRA	<b>SESSION 9</b> Friday July 19	<b>RETROSIGMOID APPROACH</b>	
15,15-16,00	<i>Lecture &amp; Anatomic demonstration:</i> Clinodectomy and Superior Transcavernous Approach	EVANDRO DE OLIVEIRA	08,30-09,15	<i>Lecture:</i> Cerebellopontine Angle Anatomy	MARCOS TATAGIBA
16,00-19,30	<b>LABORATORY:</b> - Intradural Clinodectomy - Superior Approach to the Cavernous Sinus - Superior Transcavernous Approach	ALL FACULTY MEMBERS	09,15-10,00	<i>Lecture &amp; Anatomic demonstration:</i> Retrosigmoid Approach	MARCOS TATAGIBA
<b>SESSION 5</b> Wednesday July 17	<b>LATERAL APPROACH TO THE CAVERNOUS SINUS</b>		10,30-13,30	<b>LABORATORY:</b> - Retrosigmoid Approach	ALL FACULTY MEMBERS
08,30-09,15	<i>Lecture:</i> Middle Fossa Anatomy and Pathology	JOSÉ M GONZÁLEZ-DARDER	<b>SESSION 10</b> Friday July 19	<b>PRESIGMOID APPROACH</b>	
09,15-10,00	<i>Lecture &amp; Anatomic demonstration:</i> Lateral Approach to the Middle Fossa and Cavernous Sinus	JOSÉ M GONZÁLEZ-DARDER	14,30-15,15	<i>Lecture:</i> Cerebellopontine Angle Pathology	MARCOS TATAGIBA
10,00-13,30	<b>LABORATORY:</b> - Lateral Approach to the Cavernous Sinus - Middle Fossa Approach	ALL FACULTY MEMBERS	15,15-16,00	<i>Lecture &amp; Anatomic demonstration:</i> Presigmoid Approach	MARCOS TATAGIBA
			16,00-19,30	<b>LABORATORY:</b> - Presigmoid Approach	ALL FACULTY MEMBERS

## LEARNING OBJECTIVES

1. Overview of the anatomical data and the topographic relationships of the neurovascular and skull base elements.
2. Overview of the clinical, pathophysiological and microsurgical aspects of the different locations of vascular and tumoral pathology located into and around the skull base.
3. Practical application of the anatomy for the microsurgical approaches to skull base lesions.
4. Presentation and discussion by participants and faculty of regular and complex clinical cases.
5. Increase the anatomical knowledge to improve the microsurgical approaches to the skull base with hand-on practice in laboratory with cadaveric specimens.
6. Practice with the most important surgical approaches to the skull base and surrounds, including anterior, middle and posterior fossae, pineal and tentorial incisure regions.

## CONTENTS

LECTURES AND CONFERENCES.  
MIDAS REX COURSE.  
ANATOMICAL LABORATORY.  
MICROSURGICAL APPROACHES.  
DISCUSSION OF COMPLEX CLINICAL CASES.

## LABORATORY

16 working places with cadaveric specimens, microscope, instrumentation and high speed electric motor for 32 participants.

## 6th HANDS-ON COURSE ON NEUROSURGICAL APPROACHES SKULL BASE APPROACHES

Valencia, July 15/19, 2013



HOSPITAL  
CLINIC  
UNIVERSITARI

